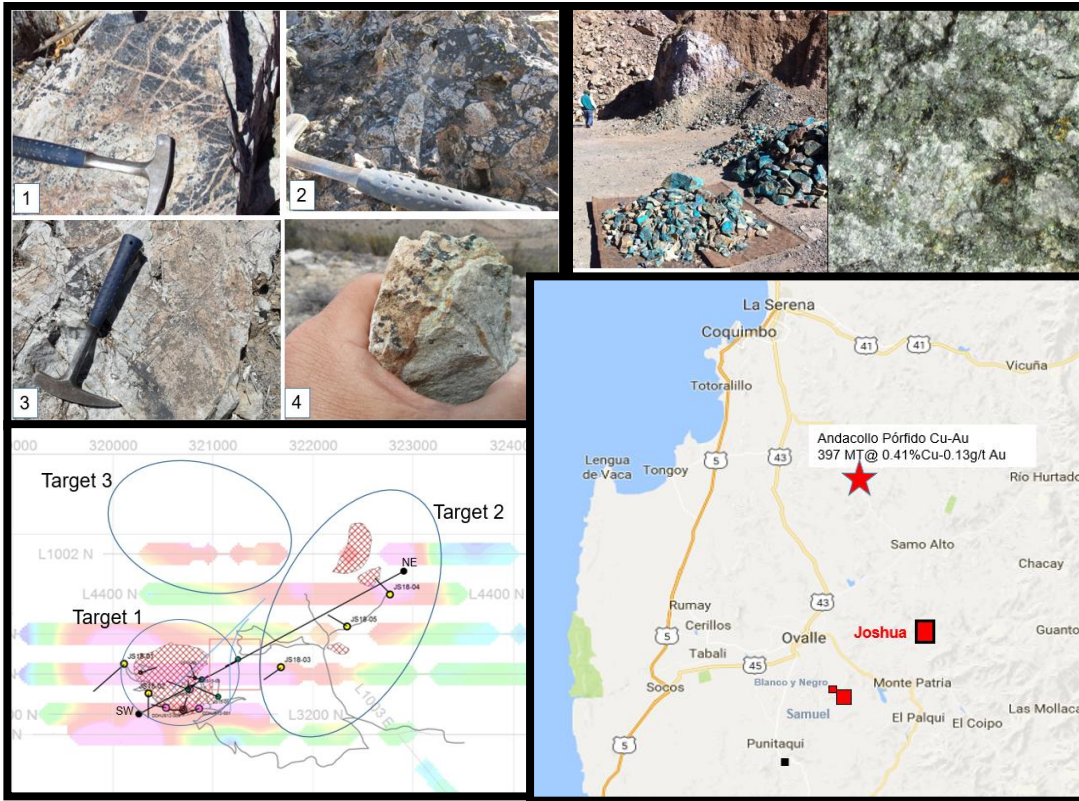




I & C

"We're your local tech partner in
South America"



The Joshua prospect

Cu - Mo Porphyry

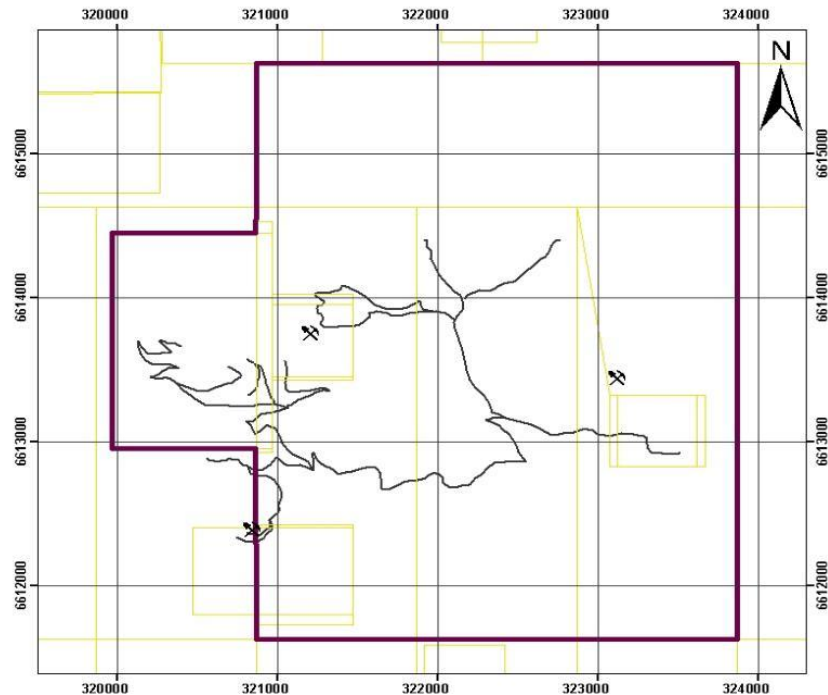


Project Location and History

- ✓ The Joshua Cu-Mo-(Au) porphyry project is located in the Upper Cretaceous–Paleocene metallogenic belt, 45 km southeast of the Cu-Au Andacollo Porphyry and 20 km north of the town of Monte Patria.
- ✓ The discovery was made in January 2011 as part of the Helix Resources exploration plan in Chile.
- ✓ 7,565 m of diamond holes and 1,200m of reverse circulation drilling have been completed.



ÁREA CONCESIONES DE EXPLOTACIÓN PROYECTO JOSHUA



Legenda

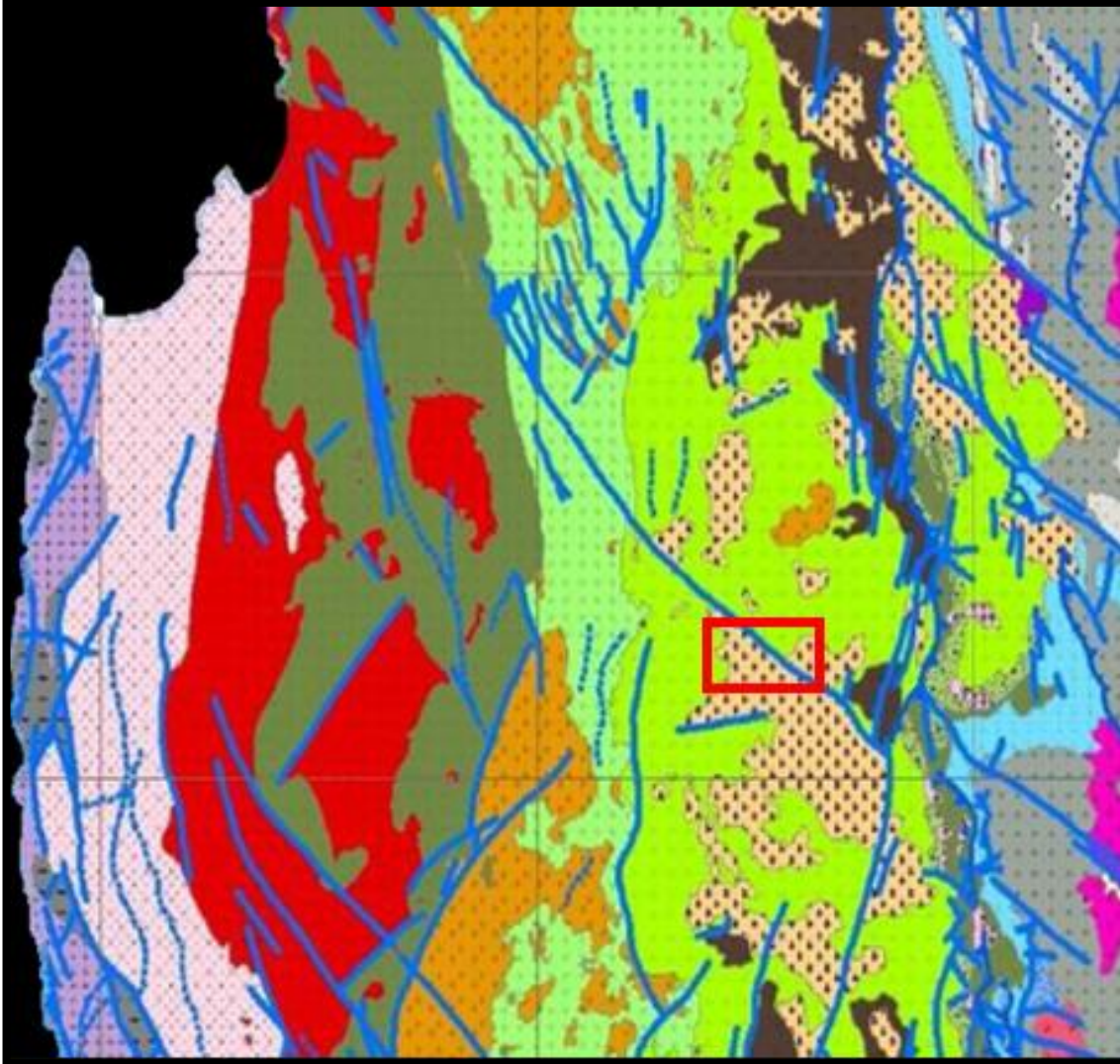
- Mina
- Propiedad minera

620 310 0 620 Meters

1:25.000

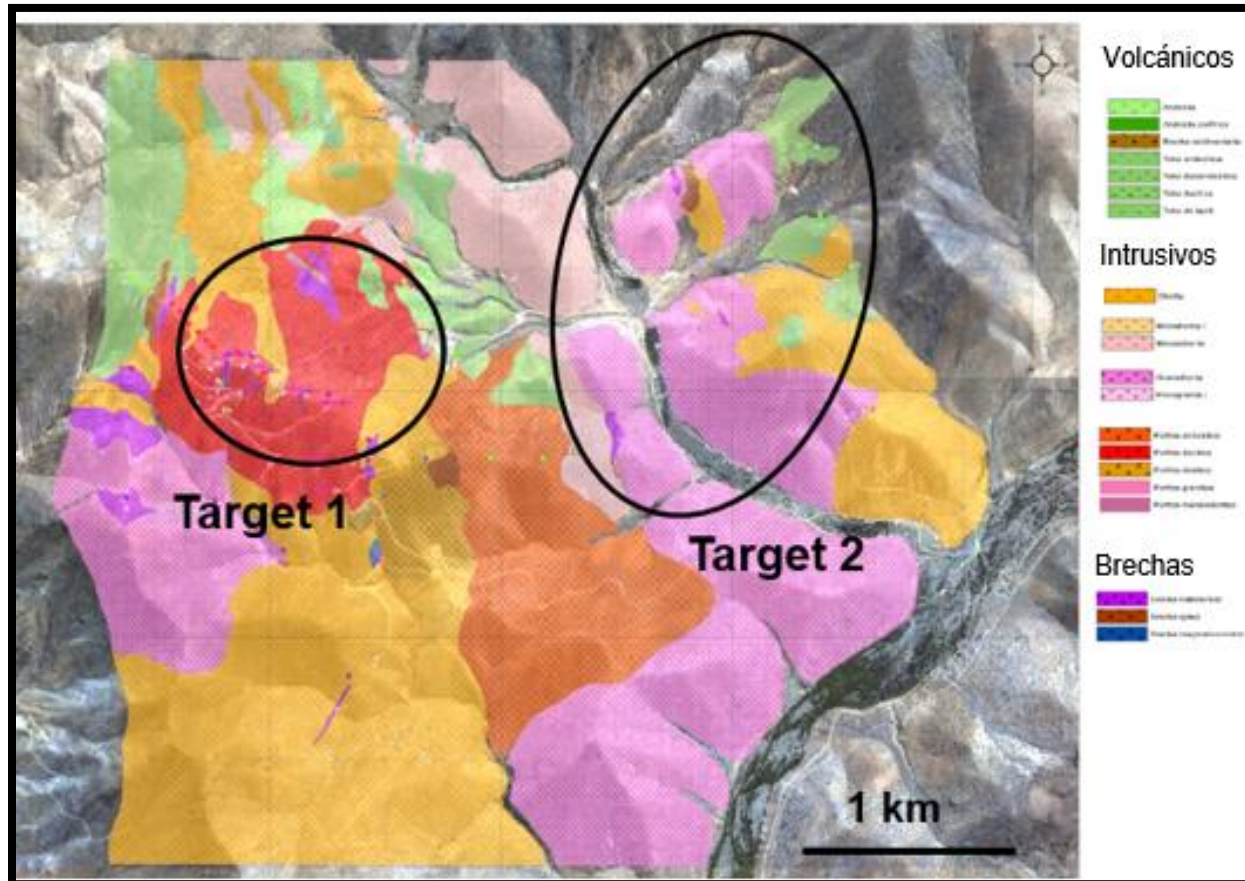
Mining Property

- ✓ The mining property is covered by five exploitation concessions that cover an area of 1,232 hectares.



Regional Geological Setting

- ✓ The project is located on the Cretaceous Porphyries belt.
- ✓ The main rock type consists of a sequence of volcanic rocks that have been intruded by dioritic to granodioritic batholith from the Upper Cretaceous to Paleocene era.
- ✓ The study area is positioned along a northwest-trending trans-lithospheric fault (Rivera & Yañez, 2009).



Geological Map 1:5,000

Joshua Geology

- ✓ In the project area, a sequence of volcanic rocks is intruded by dioritic to granodioritic stocks of Upper Cretaceous to Paleocene age.
- ✓ These units are intruded by subvolcanic bodies of dacitic, andesitic, and dioritic composition of Paleocene age.
- ✓ Two Targets have been defined in the project
 - In target 1, a total 5,800m of drilling have been conducted.
 - In Target 2, 1,836 6m of drilling has been completed.



Joshua Geology

- ✓ Carmelita Mine, artisanal exploitation:
1.5-2.5% soluble Cu, 3% insoluble Cu.
- ✓ Dacitic Porphyry: Cs > Py > Mo.



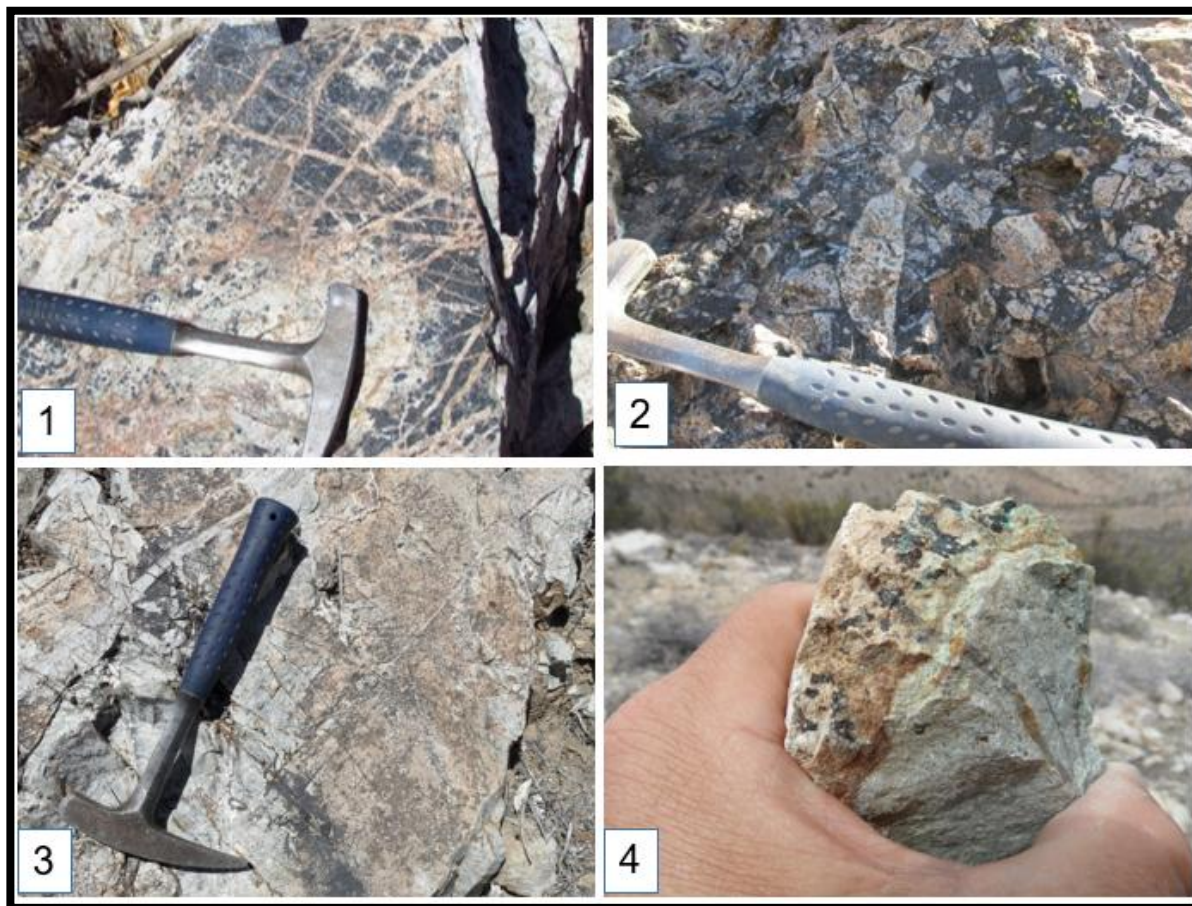
Joshua Geology

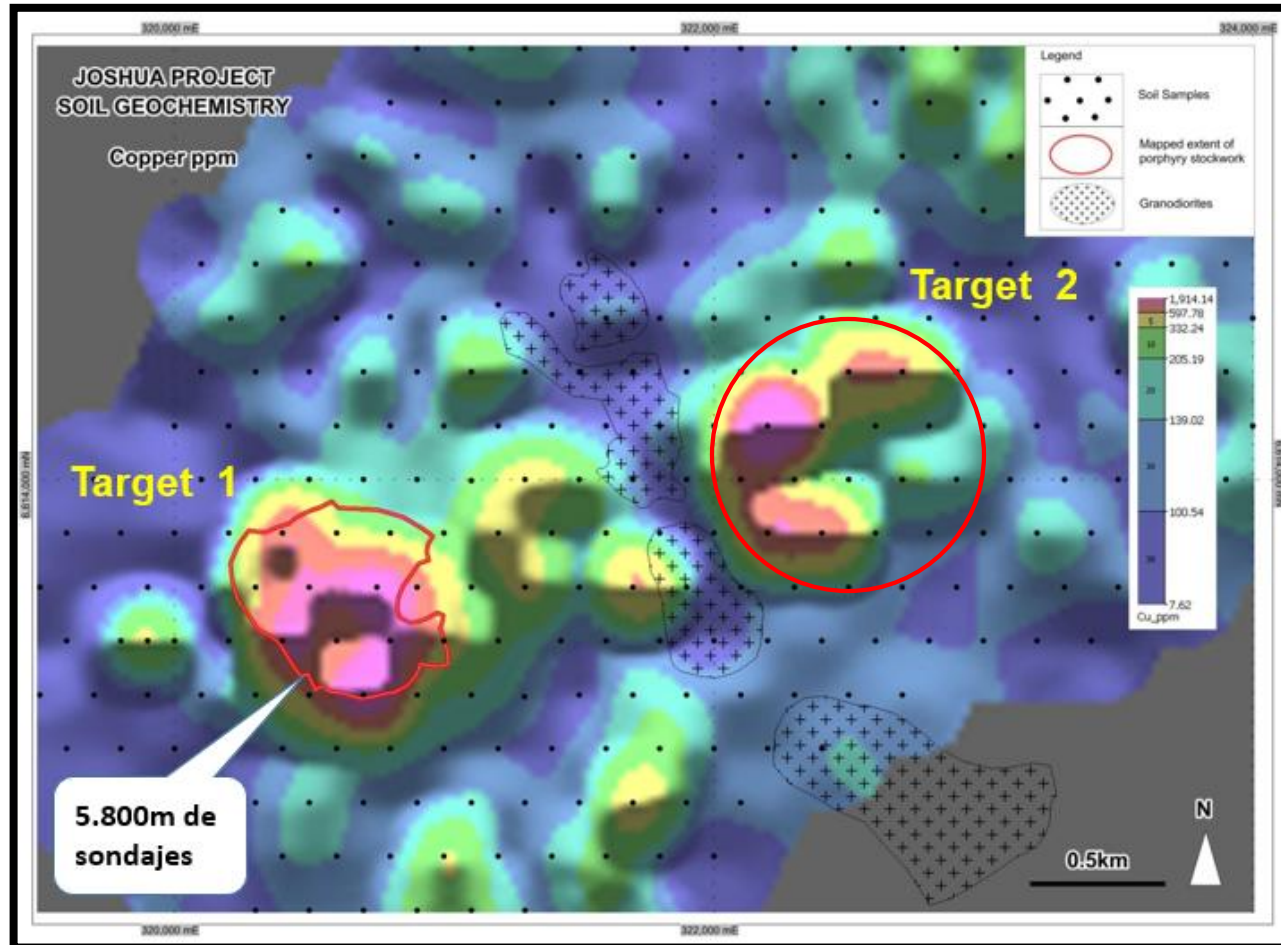
Target 1:

1. A stockwork of A-type quartz veinlets intersects a tourmaline veinlet.
2. A tourmaline breccia containing Dacitic Porphyry clasts, which is cut by early quartz veinlets.

Target 2:

1. A stockwork of quartz (QZ) veinlets within Dacitic Porphyry.
2. Dacitic Porphyry that is intersected by type A and D veinlets, which are mineralized.





Geochemistry Soil Cu Anomalies

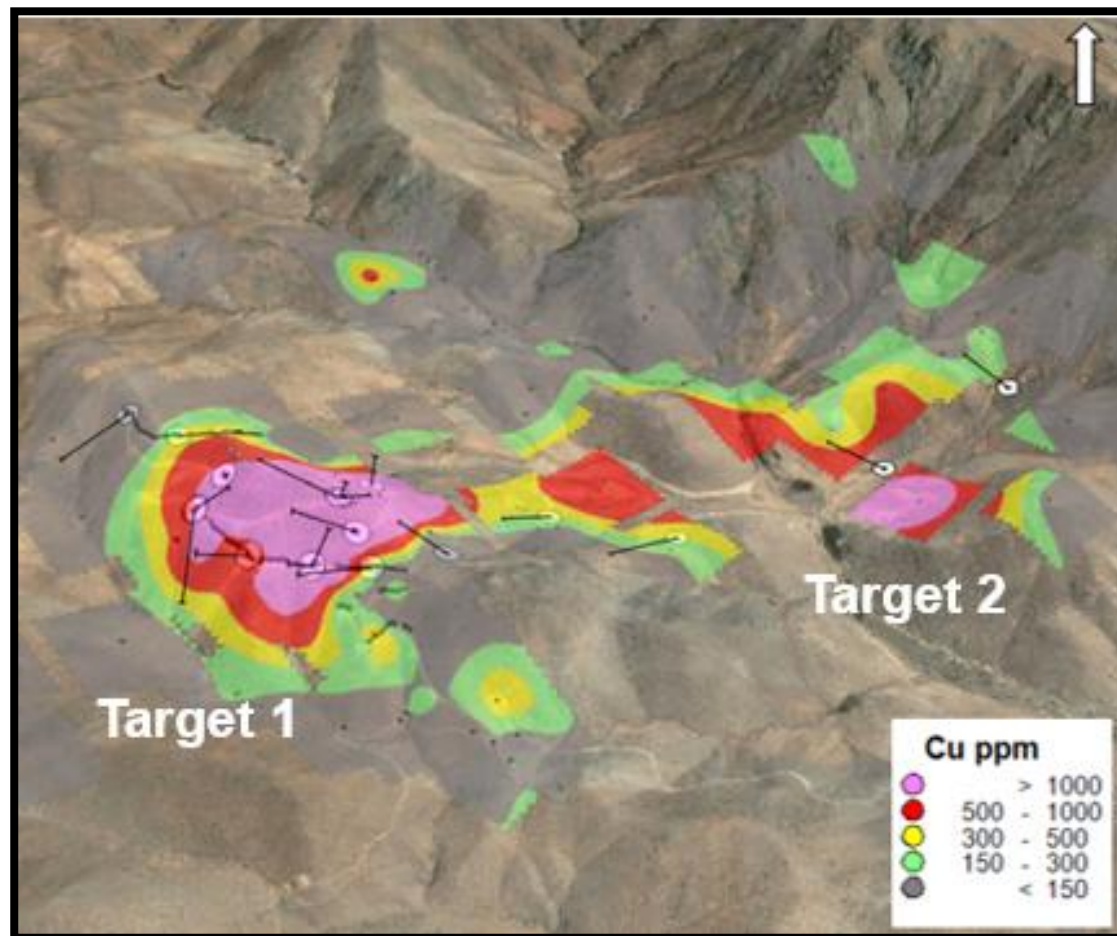
Joshua Soil Geochemistry

- A systematic geochemical soil survey was conducted, collecting a total of 315 samples.
- The results revealed a copper (Cu) anomaly extending in a northeast direction, measuring approximately 3 kilometers long and 1 kilometer wide.
- This soil Cu anomaly corresponds with a depth-induced polarization (IP) anomaly.
- Based on the soil sampling, two areas of prospective interest, referred to as Target 1 and Target 2, were identified.
- .



I & C

"We're your local tech partner in
South America"



Geochemistry Rock Cu Anomalies

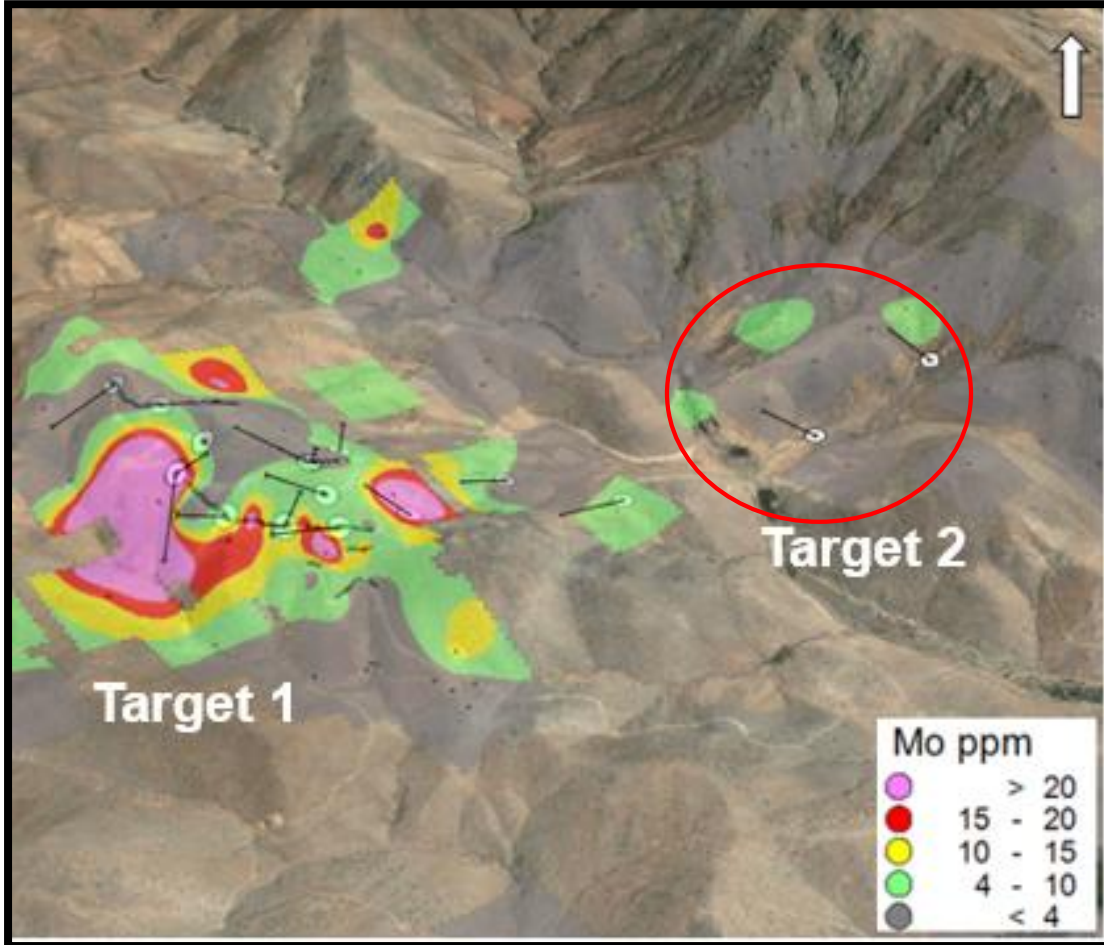
Joshua Rock Geochemistry

- Geochemical rock sampling involved a total of 136 samples.
- A copper (Cu) anomaly has been identified in the northeastern direction, extending 3 kilometers in length and 1 kilometer in width, with a threshold value of 150 ppm of Cu.
- Additionally, Targets 1 and 2 are well-defined by the rock sampling results.
- The Cu anomaly in both rock and soil samples coincides with the IP anomaly at depth.



I & C

"We're your local tech partner in
South America"



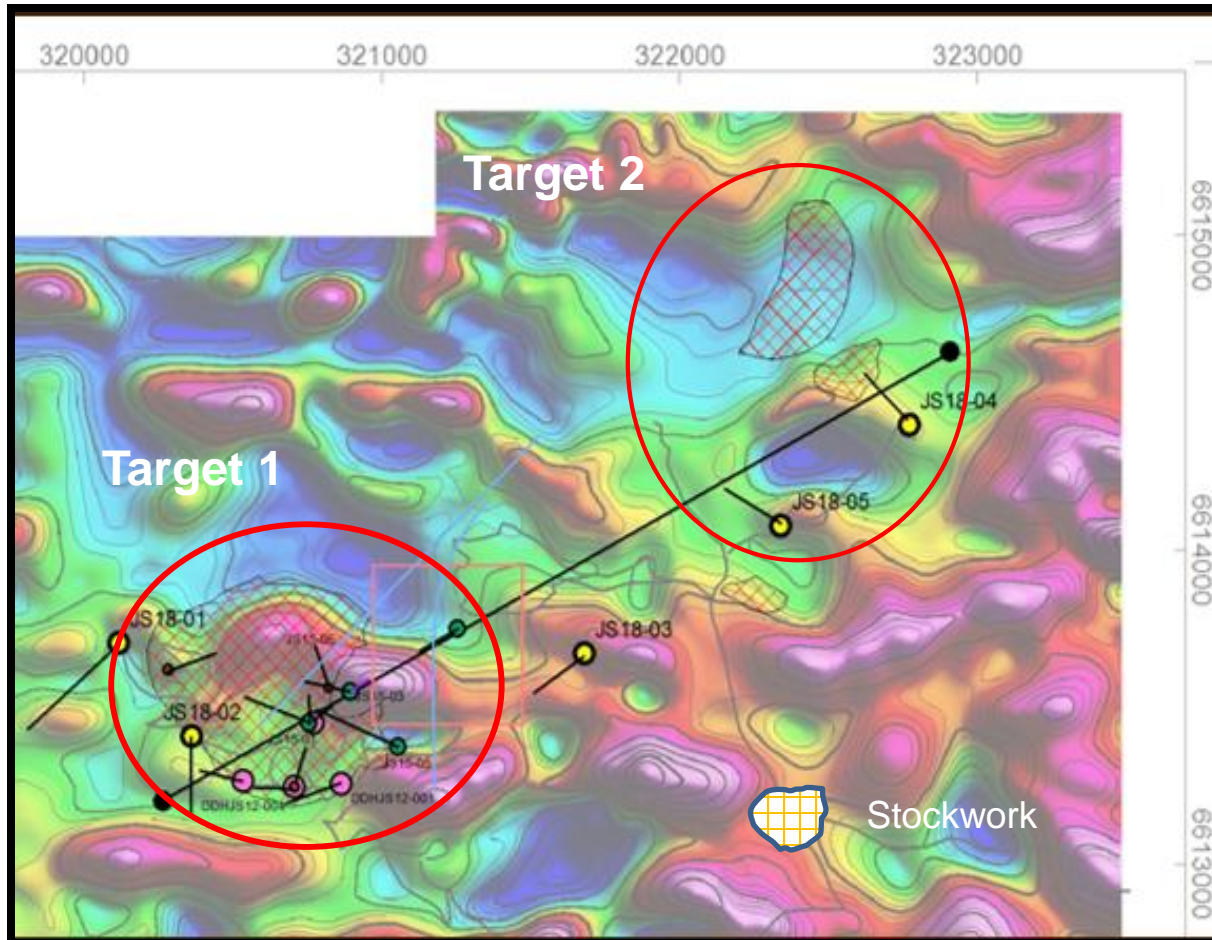
Geochemistry Rock Anomalies of Mo

Joshua Rock Geochemistry

- Geochemical rock sampling involved 136 samples.
- The threshold value for Mo is set at 4 ppm.
- Molybdenum (Mo) anomalies are concentrated in Target 1, coinciding with copper (Cu) anomalies and depth-induced polarization (IP) anomalies.



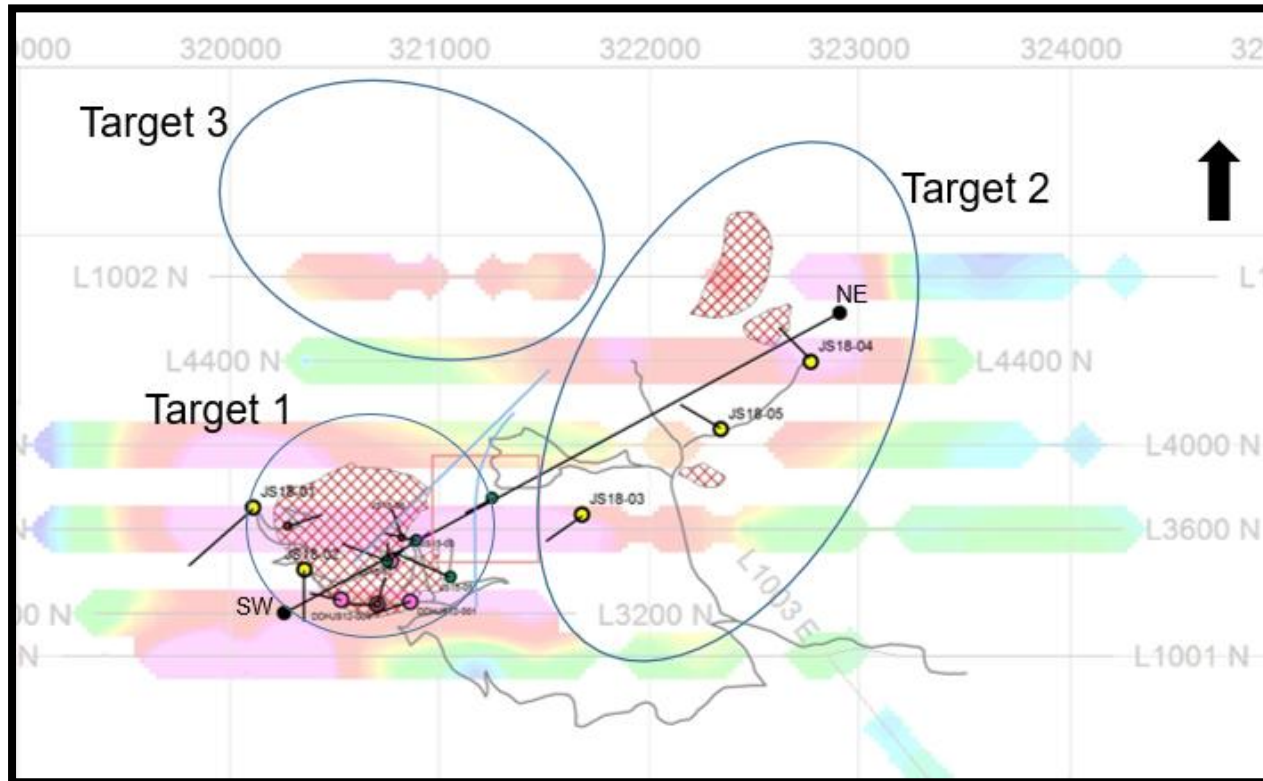
Joshua Magnetometry (RTP)



- Magnetometry AUV: GeoMagDrone
- Survey lines are placed every 50 meters in the north-south direction.-
- The total length of the survey is 51,400 meters.



IP Chargeability

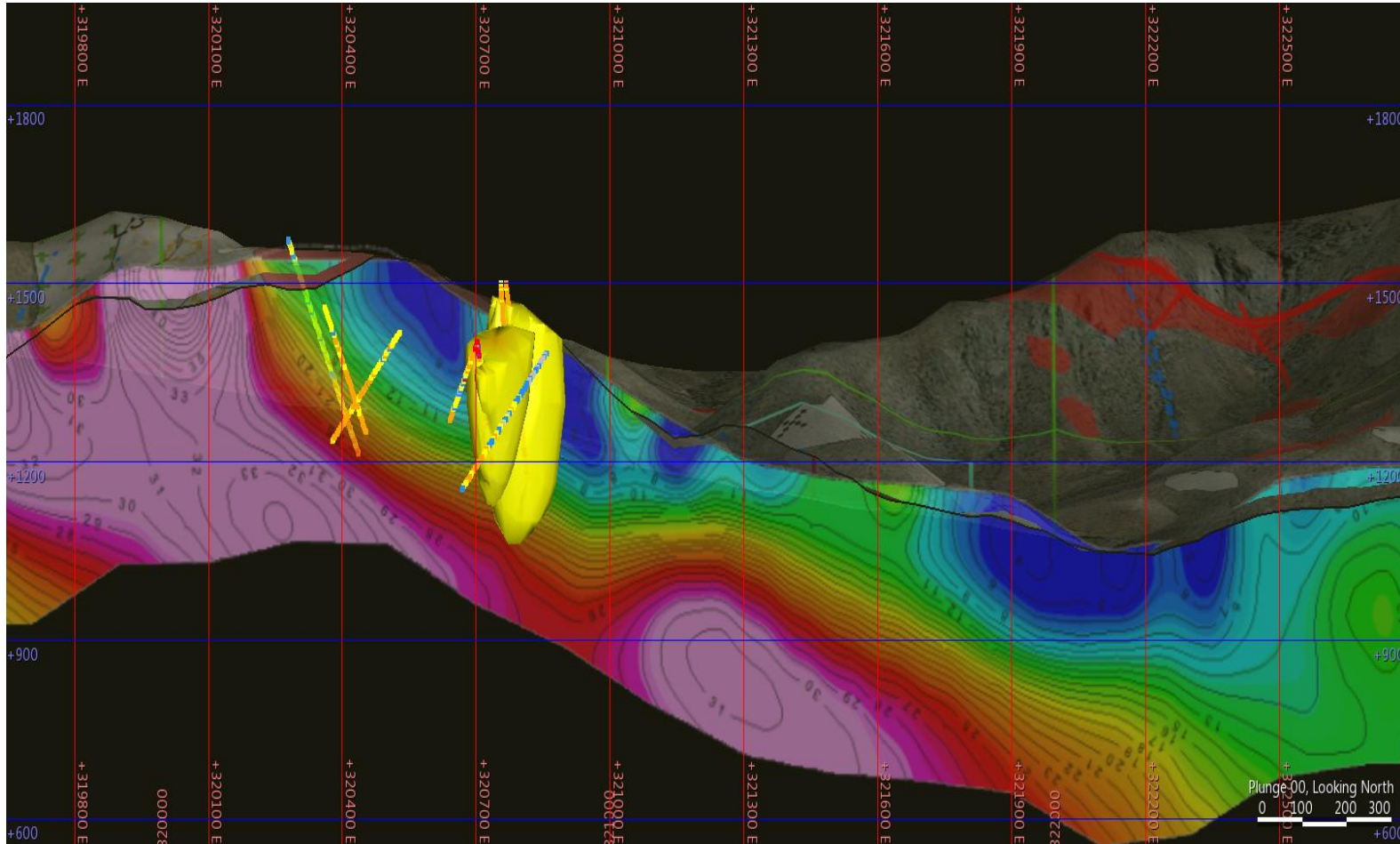


- IP Plant Chargeability at 400m from the surface.
- Target 1 and Target 2 were confirmed by drilling, while Target 3 was confirmed but without drilling.
- 6 E-W profiles every 400m.
- Totaling 26.75 km.



I & C

"We're your local tech partner in
South America"



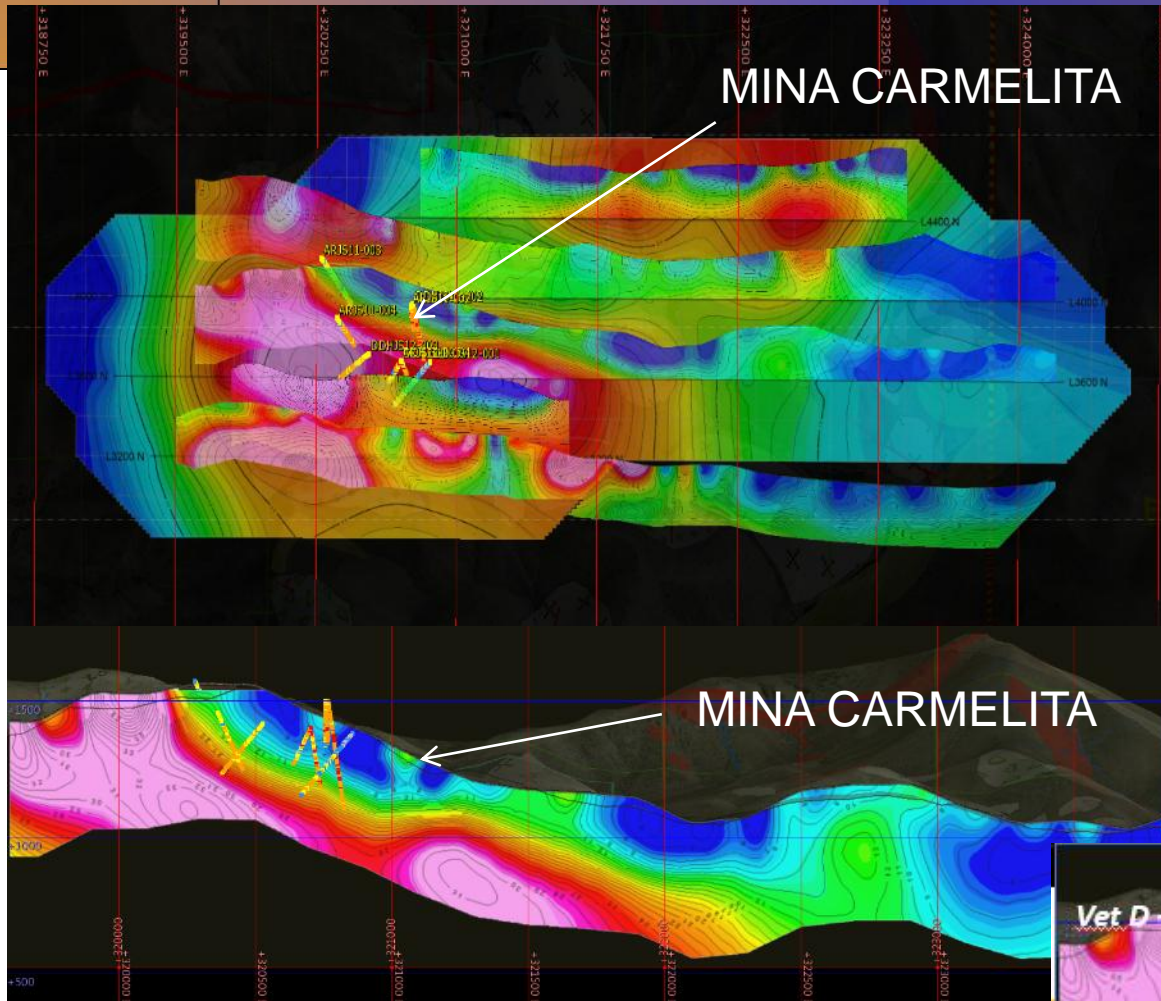
IP Chargeability

East-West section
displaying drill holes and
depth chargeability.



I & C

"We're your local tech partner in
SouthAmerica"



Geophysics – Chargeability Lines

www.inge

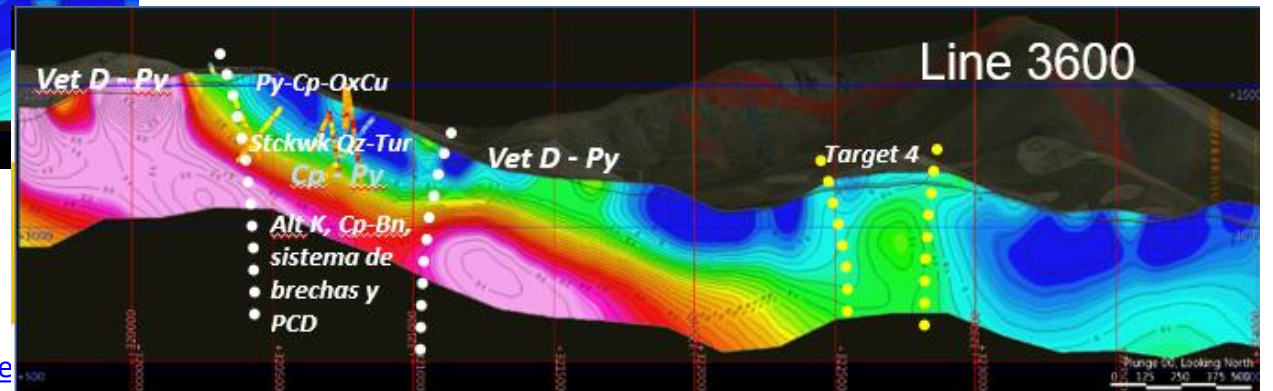
IP Chargeability

The 3D view is oriented due north of the IP lines.

The chargeability line at 3600N runs through Targets 1 and 4 to the east.

It is important to note that the drillings did not intersect the central chargeability zone, which is inclined toward the east.

This zone contains two relative highs, interpreted as the edges of pyritic halos, along with a zonation indicative of an underlying porphyry system in the central zone.





DDHJS12-02: (36-324) **288m@ 0.29%Cu/ 0.10ppm Au/ 41ppm Mo**

Inc. (116-152) **36m@ 0.40% Cu/ 0.12ppm Au/ 62ppm Mo**

Inc. (232-292) 60m @ 0.33%Cu/ 0.11ppm Au/ 43ppm Mo

L: 400m

JO15-01: (22-650) **628m@ 0.20% Cu/ 0.039ppm Au/ 8ppm Mo**

Inc. (316 -650) **334m@ 0.28% Cu/ 0.037ppm Au/ 10ppm Mo**

Inc. (316-474) **158m@ 0.33% Cu/ 0.044ppm Au/ 10ppm Mo**

Inc. (388-474) **86m@ 0.40%Cu/ 0.056ppm Au/ 9ppm Mo**

L: 698m

JS18-05: (262-288) 26mts @ 0.0094% Cu- **50ppm Mo.**

(566m-600m) 32m@ 0.25% Cu-12ppm Mo

Incluye (590m-600m) **10m@ 0.39% Cu – 16ppm Mo**

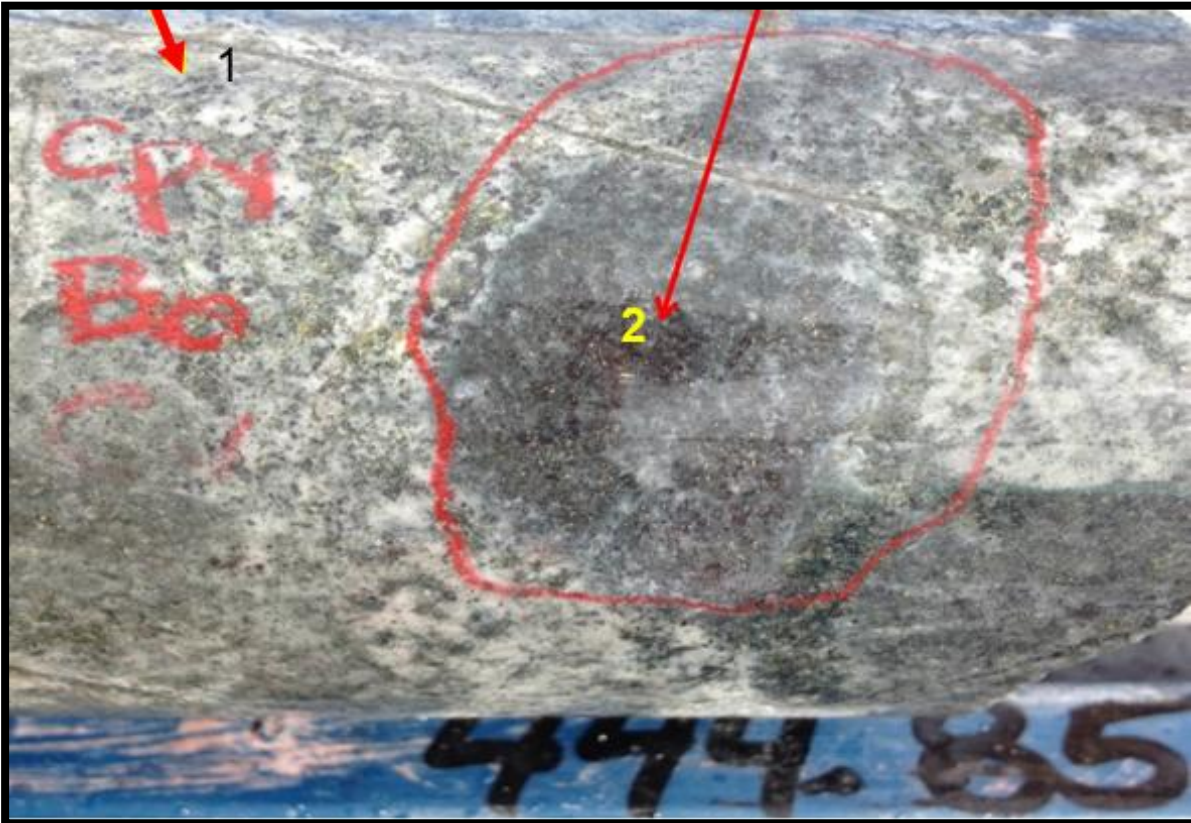
Largo 600m

Drilling

- **Helix Resources** 2011-212 : 2300m RC y DDH.
- **EPG Partners** 2015-2016 : 3470m DDH.
- **Manhattan Resources** 2018: 2965m DDH.



Drilling



DDH JO15-01

77,565 meters of diamond holes and 1,200 meters of reverse air drilling have been completed.

DDH JO15-01: Intersection from 444 to 446 meters with 0.49% Cu.

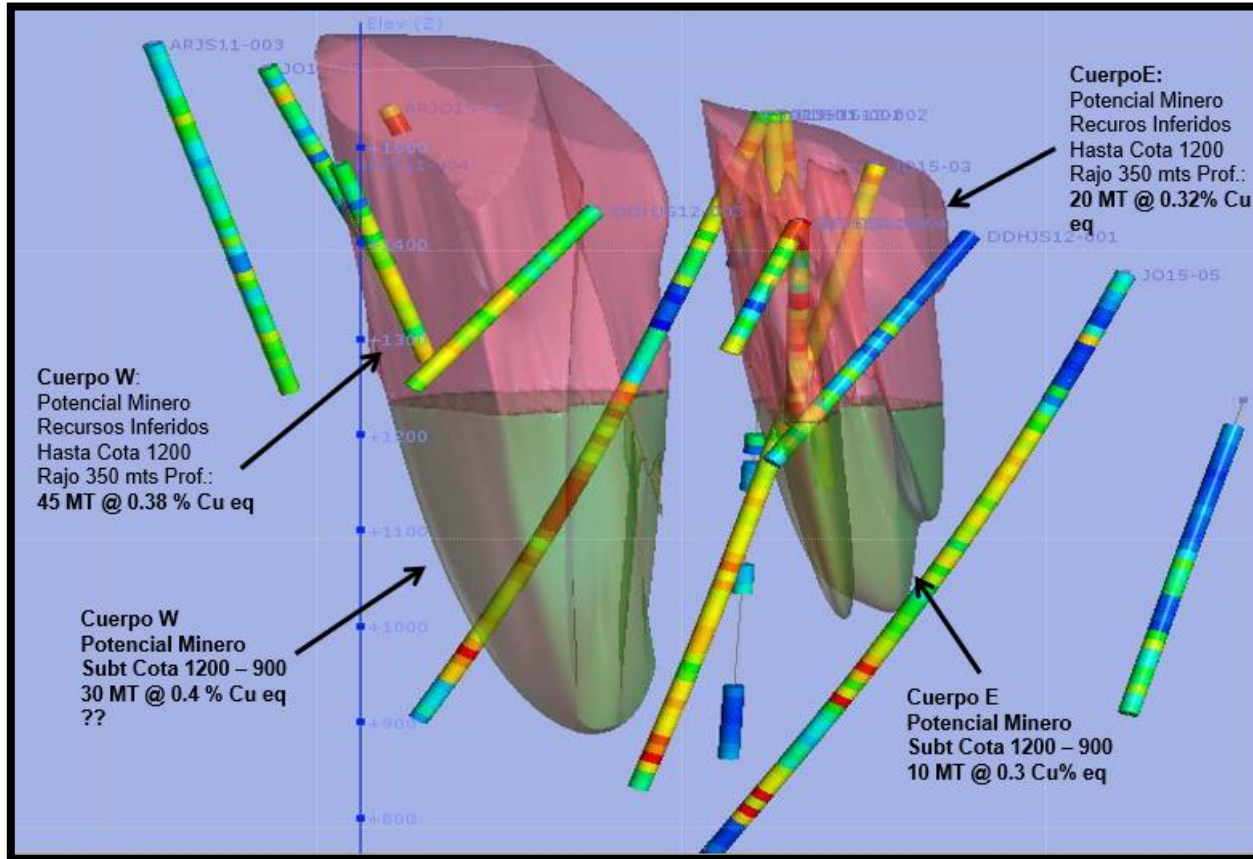
1. Chlorite-Sericite alteration with chalcopyrite mineralization superimposed on secondary biotite alteration.
2. Relict of secondary biotite with bornite and chalcopyrite mineralization



Drilling

- DDH JO15-01. Dacitic porphyry with cpy-py veinlets.
- DDH JO15-03. Diorite, Feld.K-Cpy.
- DDH JO15-05. Quartz-diorite porphyry with Cpy-Mo veinlet.
- DDH JS12-03. Andesitic porphyry cut by type D veinlets.





Inferred Resources (Sup-900m) 105 MT 0.35% Cu Eq.

Joshua Inferred Resources

EPG Partners

Inferred Resources up to elevation 1200m (350m pit)

Body W: 45 MT @ 0.38% Cu Eq.

Body E: 20 MT @ 0.32% Cu Eq.

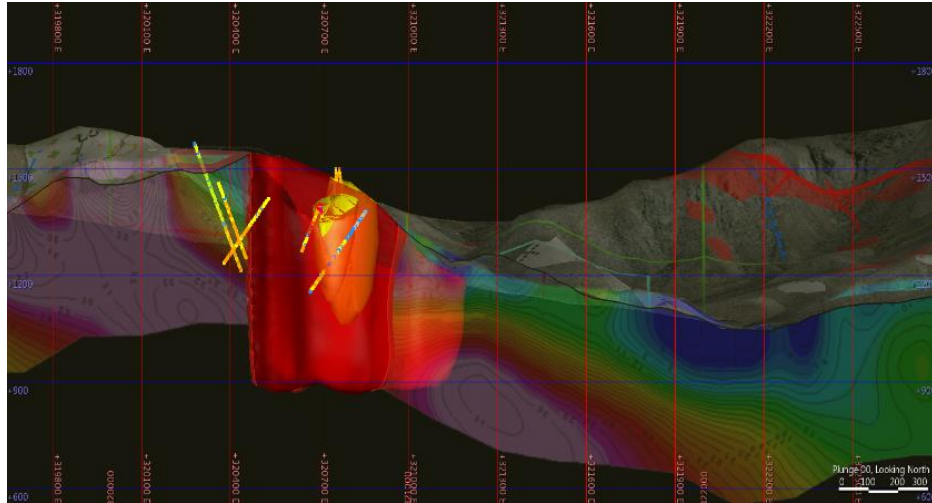
Underground Mining Potential Height 1200-900m

Body W: 30 MT @ 0.40% Cu Eq.

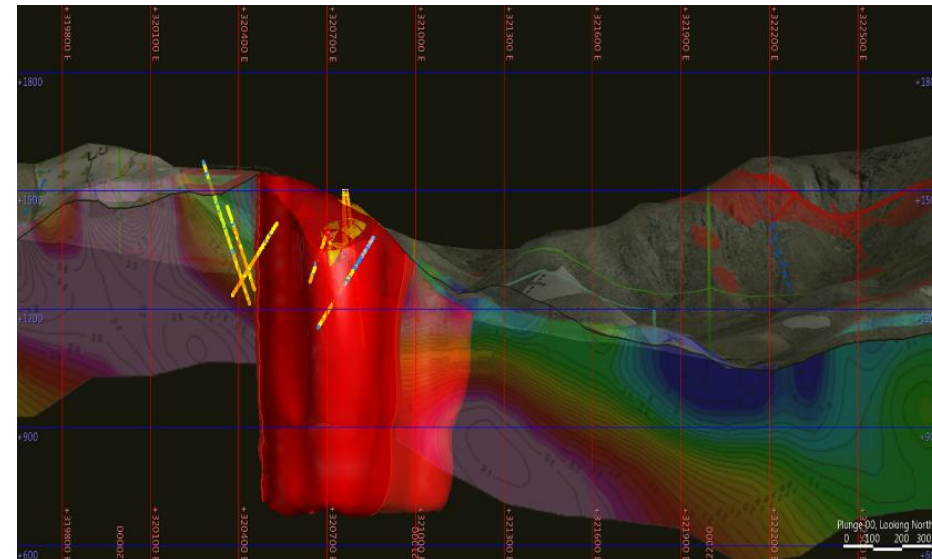
Body E: 10 MT @ 0.30% Cu Eq.



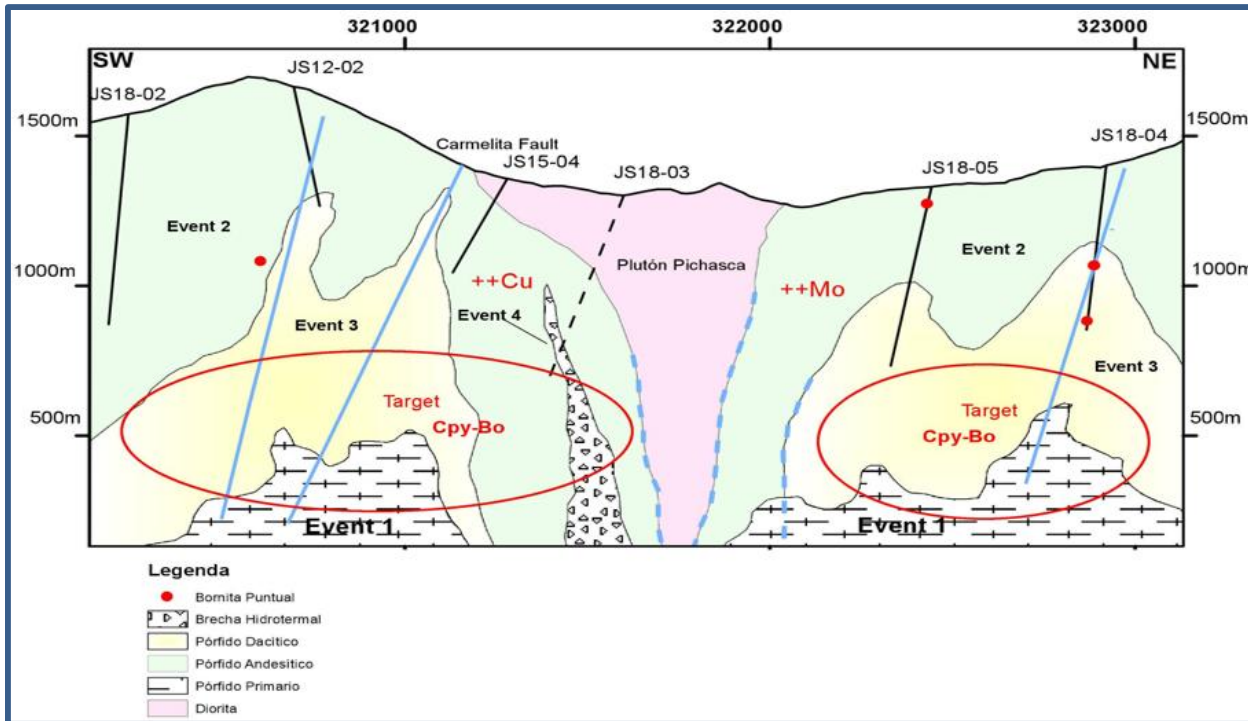
Joshua Potential



Scenario 1: Target 1 is evaluated based on the projection of the early vein envelope, extending northeast towards the Carmelita mine, and at a depth of 900 meters above sea level. The modeled volume corresponds to 346 MT at 0.5% Cu.



Scenario 2: This represents a more optimistic scenario, projecting the anterior body to an altitude of 700 meters. The modeled volume corresponds to 439MT@0.5% Cu



Joshua Conceptual Model

Conclusions

Joshua refers to the discovery of a Porphyry Cu-Mo (Au) type deposit located in the Upper Cretaceous–Paleocene metallogenic belt, approximately 45 km southeast of the Andacollo Cu-Au Porphyry deposit.

The estimated potential of this deposit could exceed 500 million tons, with grades reaching 0.5% copper, along with credits for gold and molybdenum.

The project is currently in the early exploration stage and requires further exploration to advance it to a more advance stage and confirm its potential.



I & C

"We're your local tech partner in SouthAmerica"

www.ingenieriaconsultores.com



YF Ingeniería Consultant + I&C

Eduardo Yung Moraga

- Ingeniero Civil Industrial en Minas y en Mecánica
- Certificado Project Management professional PMP #1793818
- 20+ experiencia laboral en Chile, en OM y proyectos
- 15+ involucrado en el sector minero e industrial en el Norte de Chile
- NI 43101 reportes para estudios conceptuales, PFS y FS
- En permisos, gestión de la ingeniería para estudios requeridos en DIA, sectoriales y proyectos técnicos
- Ingeniería conceptual, PFS, FS
- Liderazgo de equipos internos, expertos consultores de alto nivel en diferentes disciplinas y contratistas

Proyectos principales:

- Marimaca Copper Corp's assets
- Mantos de La Luna's assets
- Rayrock's assets
- CoroMining's assets



Latitude Consultant manager + I&C

Luis Albano Tondo

Ingeniero de Minas, MScEng, MBA Luis Albano Tondo, profesional que cuenta con mas de 33 años trabajando en la industria desde Gran, mediana y pequeñas (Junior) mineras, tanto en cargos operativos, de desarrollo de proyectos y en los últimos 10 años dedicados a posiciones ejecutivas del tipo C-Level.

- 1988 a 2004 Varios roles de Operación en Rio Tinto Brazil
- 2005 a 2010 Desarrollo de Proyectos para Kinross Gold Corporation en Brasil y Chile: construcción del Proyecto de Expansion III de Paracatu, que aun hoy es considerada la Mina y Planta de Oro más grandes en Operación en Brasil.
- 2010 a 2021: medianas y Junior Companies, como Orosur Mining (Uruguay), Minera Las Cenizas (Chile), Colossus Minerals (Brasil), Coromining and Marimaca Copper Corp (Chile). Responsable por el Gerenciamiento Estratégico del desarrollo del Proyecto Marimaca, llevandolo desde la fase de adquisicion de propiedades mineras, exploración y cuantificación de los recursos mineros, estrategia de permisos ambientales y realización de un Estudio de Alcance (PEA) emitido al mercado en 2020, que resulto en la valoración de las acciones de la Compañía en 3 veces su valor de mercado desde que asumió la posición de CEO en 2017.
- 2012 posee la Membership #307806 siendo un Fellow del Australian Institute of Mining and Metallurgy (AusIMM), podiendo actual como Qualified Person (QP) en sus áreas de expertise, particularmente a todo que se refiere a la Ingeniería Metalurgica y de Procesos Minerales.



Geologo Senior - Chile

Angelo Peri

Geólogo con 35 años de experiencia en exploración de yacimientos de Cu y Au, miembro del Colegio de Geólogos de Chile y Society of Economic Geologists. Cuenta con la capacidad de formular, implementar y desarrollar programas de exploración en variados ambientes geológicos, y formar, liderar y ser parte de equipos de exploraciones en Chile y Perú, abarcando proyectos en Argentina y Ecuador. En la implementación de diferentes proyectos de exploración ha participado directamente en relaciones comunitarias y tramitación permisos sectoriales para el desarrollo de proyectos. Ha estado involucrado directamente o he participado en el descubrimiento de depósitos y yacimientos de Cu y Au, tales como Chimborazo, Carmen, Berta, entre otros. y, en la evaluación de importantes proyectos de Cu y Au, incluyendo el Abra, Refugio, Guanaco, y de Operaciones Mineras en Chile, Perú y Argentina.



Atticus consultores de Geología

Luis Oviedo (QP)

socio fundador de South American Management SA, Miembro del Colegio de Geólogos y del Instituto de Ingenieros de Minas de Chile. Registrado ante la Comisión Calificadora de Competencias en Recursos y Reservas Mineras (CMC; Membresía Número 013). Me gradué de la Universidad de Chile como geólogo en 1977. Tengo un post grado en "Certificación y Validación de Recursos Mineros de la Queens University y PUVIC. He practicado mi profesión por más de 40 años. He estado involucrado directamente en estimaciones de recursos para todo tipo de minas, auditorías, vida media y en informes técnicos de recursos para las bolsas e instituciones financieras en Canadá, Chile, Perú, Ecuador y Colombia. Como resultado de mi experiencia y capacidades, soy una persona calificada según se define en los instrumentos, Canadiense NI 43-10, JORC y de otras bolsas del mundo.

+56 9 66870966

eyung@ingenieriaconsultores.com

WWW.MINERALOPPORTUNITIES.COM